



Government of India  
Ministry of Earth Sciences  
India Meteorological Department



Press Release

Date: 02<sup>nd</sup> August, 2025

Time of Issue: 1315 hours IST

**Subject: i) Heavy to very heavy rainfall likely to continue over Northeast & adjoining East India during next 7 days with extremely heavy falls over Sub-Himalayan West Bengal & Sikkim, Meghalaya on 02<sup>nd</sup> & 03<sup>rd</sup>, Arunachal Pradesh on 03<sup>rd</sup> and north Bihar on 02<sup>nd</sup> August, 2025.**  
**ii) Heavy to very heavy rainfall likely over Tamil Nadu, Kerala during next 6-7 days with extremely heavy falls over Kerala and ghat areas of Tamil Nadu on 05<sup>th</sup> August.**  
**iii) Subdued rainfall activities likely over central India during next 6-7 days.**

**Realised weather during past 24 hours till 0830 hours IST of today, the 02<sup>nd</sup> August, 2025:**

- ❖ **Heavy to very heavy rainfall with extremely heavy falls ( $\geq 21$  cm)** has been recorded at isolated places over Himachal Pradesh and Meghalaya.
- ❖ **Heavy to very heavy rainfall (7-20 cm)** has been recorded at isolated places over West Rajasthan, Punjab, up, Bihar, Jharkhand, Tamil Nadu; **Heavy rainfall (7-11 cm)** at isolated places over East Madhya Pradesh, Chhattisgarh, Sub-Himalayan West Bengal, Odisha, Kerala, Arunachal Pradesh, Assam and Mizoram.

For more details of realised weather, kindly refer [Annexure I](#).

**i. Weather Systems, Forecast and Warnings (refer to Annexure II & III):**

- ❖ The monsoon trough at mean sea level runs north of its normal position.
- ❖ An **upper air cyclonic circulation** lies over east Bihar & adjoining Sub-Himalayan West Bengal & Sikkim and extends upto middle tropospheric levels tilting southwestwards with height.
- ❖ An upper air cyclonic circulation over Punjab & neighbourhood and another over East Uttar Pradesh & neighbourhood in lower tropospheric levels.
- ❖ A Western Disturbance as a trough in middle & upper tropospheric levels runs roughly along Long. 72°E to the north of Lat. 32°N.
- ❖ An upper air cyclonic circulation lies over Gulf of Mannar & adjoining south Tamil Nadu middle tropospheric levels. Under the influence of these systems, the following weather is likely:

**Northeast India:**

- ❖ **Extremely heavy rainfall** very likely at isolated places over Meghalaya on 02<sup>nd</sup> & 03<sup>rd</sup>; Arunachal Pradesh on 03<sup>rd</sup> August.
- ❖ Light/moderate rainfall at many places accompanied with thunderstorm, lightning and isolated **heavy rainfall** likely to continue over Arunachal Pradesh, Assam & Meghalaya and Nagaland, Manipur, Mizoram & Tripura during 02<sup>nd</sup>-08<sup>th</sup> August with isolated **very heavy rainfall** over Arunachal Pradesh during 02<sup>nd</sup>-08<sup>th</sup> August; Assam & Meghalaya during 02<sup>nd</sup>-04<sup>th</sup> and 07<sup>th</sup> & 08<sup>th</sup> August.

**East & Central India:**

- ❖ **Extremely heavy rainfall** very likely at isolated places over Sub-Himalayan West Bengal & Sikkim on 02<sup>nd</sup> & 03<sup>rd</sup> and north Bihar on 02<sup>nd</sup> August.
- ❖ Isolated **heavy rainfall** likely over Sub-Himalayan West Bengal & Sikkim during 02<sup>nd</sup>-08<sup>th</sup>; Gangetic West Bengal on 07<sup>th</sup>; Jharkhand on 02<sup>nd</sup> & 03<sup>rd</sup>; Bihar during 02<sup>nd</sup>-04<sup>th</sup>, 07<sup>th</sup> & 08<sup>th</sup>; Chhattisgarh on 02<sup>nd</sup> August; Madhya Pradesh on 03<sup>rd</sup> & 04<sup>th</sup> August with isolated **very heavy rainfall** over Sub-Himalayan West Bengal & Sikkim on 04<sup>th</sup>; Bihar on 03<sup>rd</sup> August.

- ❖ Light to moderate rainfall at most/many places accompanied with thunderstorm & lightning likely over the region during next 5 days.

#### Northwest India:

- ❖ Isolated **heavy rainfall** likely over Jammu-Kashmir during 04<sup>th</sup>-06<sup>th</sup> August; Himachal Pradesh, Haryana, West Uttar Pradesh during 02<sup>nd</sup>-06<sup>th</sup>; Uttarakhand during 02<sup>nd</sup>-08<sup>th</sup>; Punjab on 02<sup>nd</sup>, during 04<sup>th</sup>-06<sup>th</sup>; East Uttar Pradesh during 02<sup>nd</sup>-05<sup>th</sup>; northeast Rajasthan during 03<sup>rd</sup>-05<sup>th</sup> and 08<sup>th</sup> August with **very heavy rainfall** over Himachal Pradesh on 02<sup>nd</sup>, 04<sup>th</sup> & 05<sup>th</sup>; Uttarakhand during 03<sup>rd</sup>-05<sup>th</sup>; West Uttar Pradesh on 04<sup>th</sup>; East Uttar Pradesh on 03<sup>rd</sup> & 04<sup>th</sup> August.
- ❖ Light/moderate rainfall at many places accompanied with thunderstorm & lightning likely over Western Himalayan region and many/some places over the plains during next 7 days.

#### South Peninsular India:

- ❖ **Extremely heavy rainfall** very likely at isolated places over Kerala and ghat areas of Tamil Nadu on 05<sup>th</sup> August.
- ❖ Isolated **heavy rainfall** likely over Tamil Nadu, Kerala & Mahe during 02<sup>nd</sup>-08<sup>th</sup>; Coastal & North Interior Karnataka during 05<sup>th</sup>-08<sup>th</sup>; Coastal Andhra Pradesh on 04<sup>th</sup> & 05<sup>th</sup>; Rayalaseema during 03<sup>rd</sup>-06<sup>th</sup> August with **very heavy rainfall** over Tamil Nadu during 03<sup>rd</sup>-05<sup>th</sup> and Kerala & Mahe during 03<sup>rd</sup>-08<sup>th</sup> August.
- ❖ Strong surface winds (speed reaching 40-50 kmph) very likely over South Peninsular India during next 5 days.
- ❖ Light to moderate rainfall at some/many places over Kerala & Mahe, Lakshadweep, Karnataka, Rayalaseema, Coastal Andhra Pradesh & Yanam and Telangana during next 7 days.

#### West India:

- ❖ Light to moderate rainfall at many/some places very likely over the region during next 6-7 days.

#### Fishermen warning:

**Fishermen are advised to avoid venturing into the following from 02<sup>nd</sup> August to 07<sup>th</sup> August 2025 to the following Areas:**

**Arabian Sea:** many parts of southeast Arabian Sea; Along and off Gujarat coast and adjoining sea areas; Kerala & Karnataka coast and adjoining sea areas during 04<sup>th</sup> August to 07<sup>th</sup> August; some parts of southeast Arabian Sea for 02<sup>nd</sup>, 03<sup>rd</sup> August; many parts of southwest Arabian Sea during 02<sup>nd</sup> to 07<sup>th</sup> August; most parts of central Arabian Sea; southern parts of north Arabian Sea; along and off the Somalia coast and adjoining sea areas, south Oman and adjoining Yemen coast & adjoining sea areas during 02<sup>nd</sup> to 07<sup>th</sup> August.

**Bay of Bengal:** Many parts of southwest Bay of Bengal & few parts of southeast Bay of Bengal, Gulf of Mannar & Comorin area during 02<sup>nd</sup> to 07<sup>th</sup> August; Over Lakshadweep area during 02<sup>nd</sup> August.

#### ii. Weather conditions and forecast over Delhi/NCR during 02<sup>nd</sup> to 05<sup>th</sup> August, 2025 (Annexure IV)

**For more details, kindly refer National Weather Bulletin:**

[https://mausam.imd.gov.in/responsive/all\\_india\\_forecast\\_bulletin.php](https://mausam.imd.gov.in/responsive/all_india_forecast_bulletin.php)

**For District wise warnings refer:** <https://mausam.imd.gov.in/responsive/districtWiseWarningGIS.php>

**Rainfall recorded (in cm) during past 24 hours till 0830 hours IST of today, the 02<sup>nd</sup> August:**

**Himachal Pradesh:** Una (dist Una) 22; Bilaspur Sadar (dist Bilaspur) 12; Chuari (dist Chamba) 10; Nadaun (dist Hamirpur), Chamba AWS (dist Chamba), Dehra Gopipur (dist Kangra), Barthin (dist Bilaspur), Sujanpur Tira (dist Hamirpur) 7 Each;

**Assam & Meghalaya:** Mawsynram (dist East Khasi Hills) 21; Cherrapunji(rkm) (dist East Khasi Hills) 15; Mawkyrwat (dist South West Khasi Hills) 14; Cherrapunji (dist East Khasi Hills) 12; Jorhat (dist Jorhat) 8; N.lakhimpur/Lilabari (dist Lakhimpur), Khliehriat (dist East Jaintia Hills) 7 Each;

**Bihar:** Jhajha (dist Jamui), Gidhaur (dist Jamui) 18 Each; Chanan (dist Lakhisarai), Barhat (dist Jamui) 17 Each; Ghat Kushumba (dist Sheikhpura) 16; Laxmipur (dist Jamui), Hoswari (dist Patna), Barhiya (dist Lakhisarai) 13 Each; Jamui (dist Jamui) 12; Sarmera (dist Nalanda) 11; Sonhaura (dist Bhagalpur), Pipariya (dist Lakhisarai) 10 Each; Hayaghat (dist Darbhanga), Bind (dist Nalanda), Warisnagar (dist Samastipur) 9 Each; Pusa (dist Samastipur), Halsi (dist Lakhisarai) 8 Each; Samastipur (dist Samastipur), Amarpur (dist Banka), Aryari (dist Sheikhpura), Shambhuganj (dist Banka), Sultanganj (dist Bhagalpur), Ujiarpur (dist Samastipur) 7 Each;

**Jharkhand:** Pathargama (dist Godda) 17; Mehgawan (dist Godda) 10; Godda (dist Godda) 9;

**West Rajasthan:** Sriganganagar Tehsil SR (dist Sri Ganganagar) 16; Ganganagar (dist Sri Ganganagar) 11; Pilibanga SR (dist Hanumangarh), Garsana SR (dist Sri Ganganagar), Suratgarh (dist Sri Ganganagar) 8 Each;

**Punjab:** Nangal (dist Rupnagar) 14; Hoshiarpur AWS (dist Hoshiarpur), Gurdaspur AMFU (dist Gurdaspur) 11 Each; Tibri (dist Gurdaspur) 10; Dhariwal Irr (dist Gurdaspur) 9; Salern AWS (dist Hoshiarpur), Pathankot IAF (dist Pathankot) 8 Each; Madhopur (dist Pathankot), Phangota (dist Pathankot) 7 Each;

**East Uttar Pradesh:** Chhibramau (dist Kannauj) 13; Ankinghat (dist Kanpur City) 11;

**West Uttar Pradesh:** Sahawar (dist Kasganj) 13;

**Tamil Nadu, Puducherry & Karaikal:** Vanamadevi (dist Cuddalore), Lower Anaicut (dist Thanjavur) 11 Each; Sembanarkoil PWD (dist Mayiladuthurai) 10; Jayamkondam (dist Ariyalur), Ulundurpet (dist Kallakurichi) 9 Each; Tirupuvanam (dist Sivaganga), Sendurai (dist Ariyalur), Lalpet (dist Cuddalore), Src Kudithangi (dist Cuddalore), Rscl-2 Kedar (dist Villupuram) 8 Each; Cuddalore (dist Cuddalore), Karaikudi (dist Sivaganga), Vilupuram (dist Villupuram), Panruti (dist Cuddalore), Kurinjipadi (dist Cuddalore), Collectorate (dist Cuddalore), Dscl Eraiyur (dist Kallakurichi), Rscl-2 Soorapattu (dist Villupuram) 7 Each;

**Kerala & Mahe:** Udumbannoor AWS (dist Idukki) 10;

**Arunachal Pradesh:** Itanagar (dist Papumpara) 10; Naharlagun (dist Papumpara), Naharlagun AWS (dist Papumpara) 9 Each;

**Sub Himalayan West Bengal & Sikkim:** Rongli (dist Pakyong) 9; Pedong (dist Kalimpong), Munsong (dist Darjeeling) 7 Each;

**East Madhya Pradesh:** Mauganj (dist Rewa) 8; Majholi (dist Jabalpur), Naigarhi (dist Rewa) 7 Each;

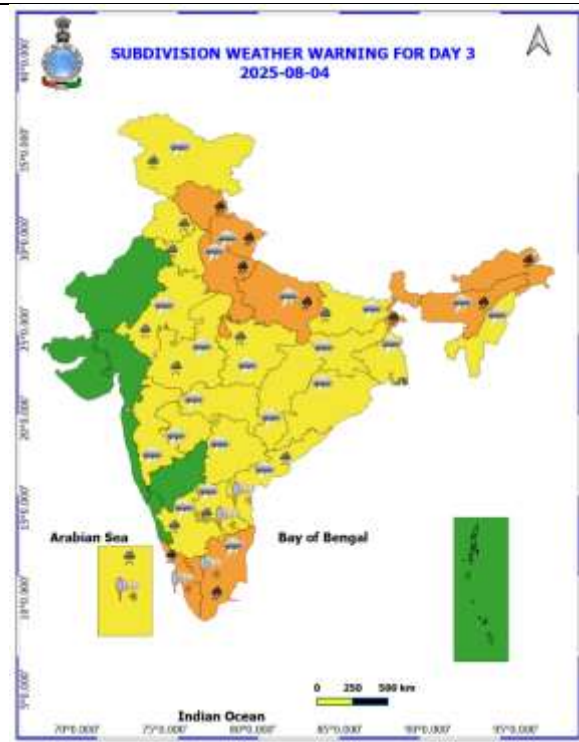
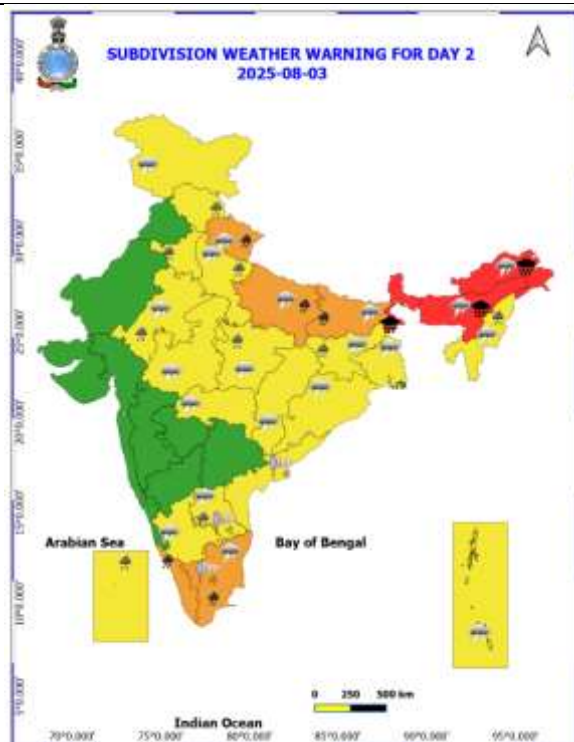
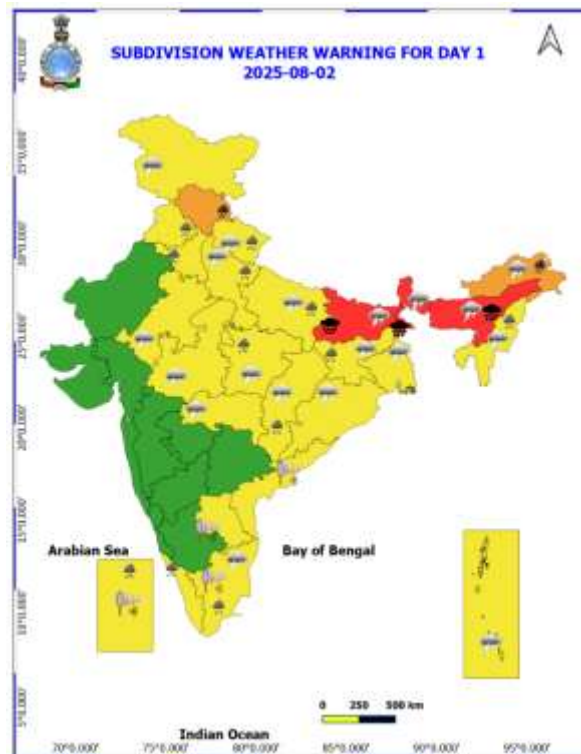
**Chhattisgarh:** Odagi (dist Surajpur) 7;

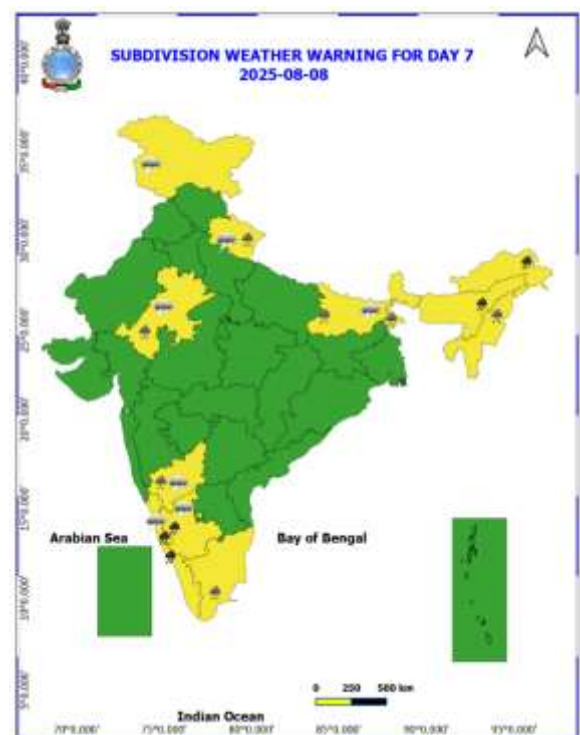
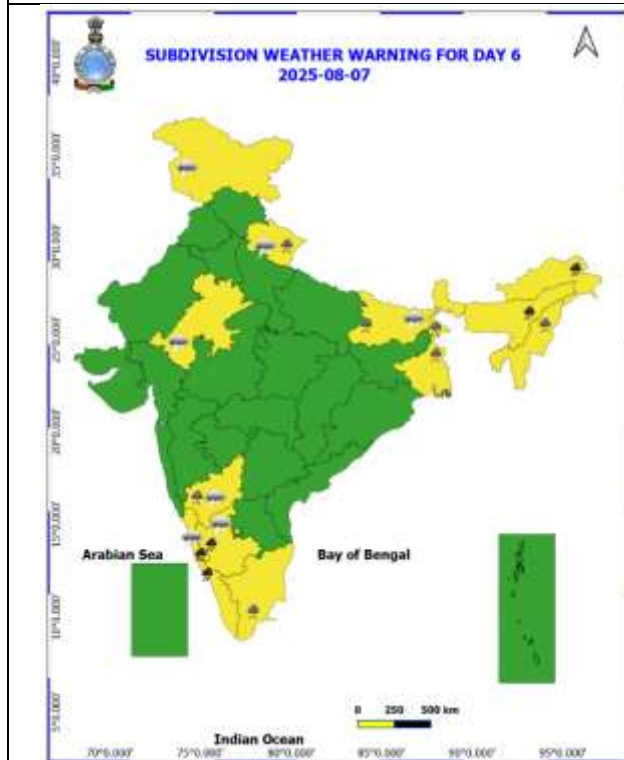
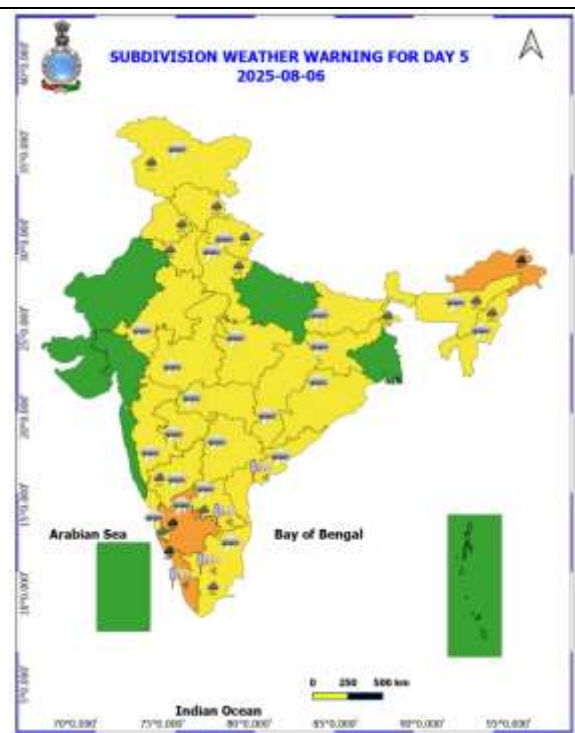
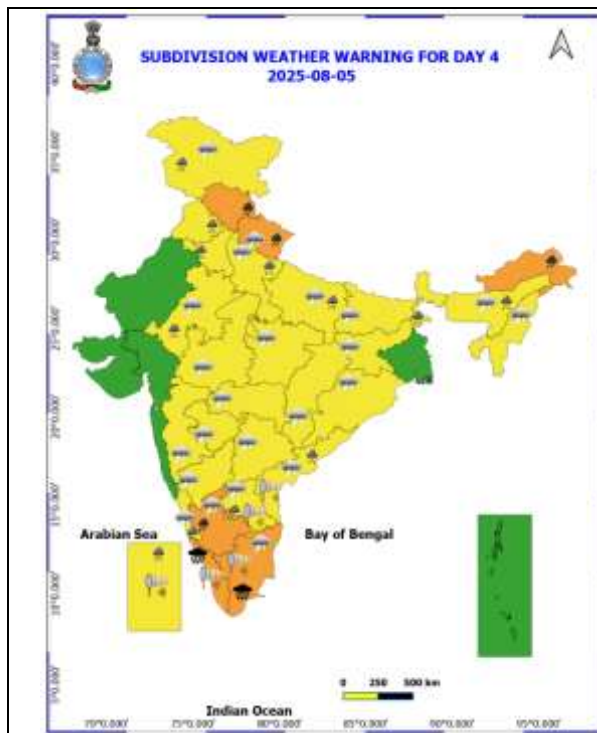
**Odisha:** Tensa (dist Sundargarh) 7.

Table-1								
7 Days Rainfall Forecast								
S.No.	Subdivision	2- Aug	3- Aug	4- Aug	5- Aug	6- Aug	7- Aug	8- Aug
		Day 1	Day 2	Day 3	Day 4	Day 5	Day 6	Day 7
1	ANDAMAN & NICOBAR ISLANDS	SCT	SCT	SCT	SCT	FWS	FWS	SCT
2	ARUNACHAL PRADESH	WS	WS	WS	FWS	WS	WS	WS
3	ASSAM & MEHGHALAYA	WS	WS	WS	FWS	FWS	WS	WS
4	NAGALAND, MANIPUR, MIZORAM AND TRIPURA	WS	WS	FWS	FWS	FWS	WS	WS
5	SUB HIMALAYAN WEST BENGAL & SIKKIM	WS	WS	WS	WS	WS	WS	WS
6	GANGETIC WEST BENGAL	WS	FWS	WS	FWS	FWS	WS	WS
7	ODISHA	SCT	SCT	SCT	SCT	FWS	FWS	FWS
8	JHARKHAND	FWS	FWS	SCT	SCT	SCT	SCT	FWS
9	BIHAR	WS	WS	FWS	SCT	SCT	FWS	FWS
10	EAST UTTAR PRADESH	FWS	FWS	WS	FWS	FWS	SCT	SCT
11	WEST UTTAR PRADESH	SCT	FWS	WS	FWS	FWS	SCT	SCT
12	UTTARAKHAND	WS	WS	WS	WS	FWS	FWS	FWS
13	HARYANA, CHANDIGARH & DELHI	FWS	FWS	FWS	FWS	FWS	FWS	FWS
14	PUNJAB	FWS	SCT	FWS	FWS	FWS	SCT	SCT
15	HIMACHAL PRADESH	WS	FWS	WS	WS	FWS	FWS	FWS
16	JAMMU AND KASHMIR AND LADAKH	SCT	SCT	SCT	WS	FWS	SCT	SCT
17	WEST RAJASTHAN	ISOL	ISOL	ISOL	ISOL	ISOL	ISOL	ISOL
18	EAST RAJASTHAN	SCT	SCT	SCT	FWS	SCT	SCT	FWS
19	WEST MADHYA PRADESH	SCT	SCT	SCT	SCT	SCT	SCT	SCT
20	EAST MADHYA PRADESH	FWS	FWS	FWS	SCT	SCT	FWS	FWS
21	GUJRAT REGION	FWS	FWS	FWS	FWS	FWS	FWS	FWS
22	SAURASHTRA & KUTCH	SCT	SCT	SCT	SCT	SCT	SCT	SCT
23	KONKAN & GOA	FWS	FWS	FWS	WS	WS	WS	WS
24	MADHYA MAHARASHTRA	ISOL	ISOL	ISOL	SCT	SCT	SCT	SCT
25	MARATHWADA	ISOL	ISOL	ISOL	SCT	SCT	SCT	SCT
26	VIDARBHA	SCT	SCT	ISOL	ISOL	SCT	FWS	FWS
27	CHHATTISGARH	FWS	SCT	SCT	SCT	SCT	FWS	FWS
28	COASTAL ANDHRA PRADESH	ISOL	ISOL	SCT	FWS	SCT	FWS	FWS
29	TELANGANA	ISOL	ISOL	SCT	SCT	SCT	FWS	FWS
30	RAYALASEEMA	ISOL	SCT	FWS	FWS	FWS	FWS	FWS
31	TAMILNADU & PUDUCHERRY	SCT	FWS	FWS	FWS	SCT	SCT	SCT
32	COSTAL KARNATAKA	WS	WS	WS	WS	WS	WS	WS
33	NORTH INTERIOR KARNATAKA	ISOL	SCT	SCT	FWS	FWS	WS	WS
34	SOUTH INTERIOR KARNATAKA	SCT	FWS	FWS	WS	WS	WS	WS
35	KERALA AND MAHE	WS	WS	WS	WS	WS	WS	WS
36	LAKSHADWEEP	WS	WS	WS	WS	WS	WS	WS

- As the lead period increases forecast accuracy decrease.







- Action may be taken based on ORANGE AND REDCOLOUR warnings.
- Vulnerable regions likely urban and hilly areas action may be initiated for heavy rainfall warning.
- As the lead period increases forecast accuracy decreases.

Detailed districtwise Multi Hazard weather warning for next five days available at  
<https://mausam.imd.gov.in/responsive/districtWiseWarningGIS.php>

**Weather forecast over Delhi/NCR during 02<sup>nd</sup> to 05<sup>th</sup> August 2025****Past Weather:**

There has been rise in the minimum temperature up to 1°C and rise in maximum temperature up to 2 - 3°C over Delhi/NCR during the past 24 hours. The maximum and minimum temperatures over Delhi were around 32 to 33°C and 24 to 26°C respectively. The minimum temperature was below normal up to 1 - 2°C and the maximum temperature was below normal up to 1 - 2°C. Generally cloudy sky conditions with predominant surface wind from the southwest direction with wind speeds up to 14 kmph prevailed during the past 24 hours. Very light to light rainfall has been recorded in most places over Delhi. Generally cloudy sky conditions with a wind speed of less than 14 kmph from the southwest direction prevailed over the region in the forenoon today.

**Weather Forecast:**

**02.08.2025:** Generally cloudy sky. A spell of very light to light rain/thundershowers during afternoon/evening. Another spell of very light to light rain during early hours/early morning. The maximum temperatures over Delhi are likely to be in the range of 33 to 35°C. The maximum temperature will be above normal up to 1 to 2°C. The predominant surface wind will likely be from the northwest direction with a wind speed of 10-15 kmph in the afternoon. The wind speed will gradually decrease becoming 05-10 kmph from the southwest direction during evening and night.

**03.08.2025:** Generally cloudy sky. A few spells of light to moderate rain/thundershower. The maximum and minimum temperatures over Delhi are likely to be in the range of 31 to 33°C and 24 to 26°C respectively. The minimum temperature will be below normal up to 1 to 3°C and the maximum temperature will be below normal up to 1 to 3°C. The predominant surface wind will likely be from the west direction with a wind speed of 10-15 kmph during the morning hours. The wind speed will gradually increase becoming 15-20 kmph from the southwest direction in the afternoon. It will gradually decrease becoming 08-12 kmph from the southwest direction during the evening and night.

**04.08.2025:** Generally cloudy sky. A few spells of light to moderate rain/thundershower. The maximum and minimum temperatures over Delhi are likely to be in the range of 32 to 34°C and 23 to 25°C respectively. The minimum temperature will be below normal up to 1 to 3°C and the maximum temperature will be below normal up to 1 to 2°C. The predominant surface wind will likely be from the west direction with a wind speed of less than 08-12 kmph during the morning hours. The wind speed will gradually increase becoming 10-15 kmph from the southwest direction in the afternoon. It will gradually decrease becoming less than 10 kmph from the southwest direction during the evening and night.

**05.08.2025:** Partly cloudy sky. Very light to light rain/thundershower. The maximum and minimum temperatures over Delhi are likely to be in the range of 32 to 34°C and 24 to 26°C respectively. The minimum temperature will be below normal up to 1 to 2°C and the maximum temperature will be below normal up to 1 to 2°C. The predominant surface wind will likely be from the northeast direction with a wind speed of 08-12 kmph during the morning hours. The wind speed will gradually increase becoming 10-15 kmph from the northeast direction in the afternoon. It will gradually decrease becoming less than 12 kmph from the northeast direction during the evening and night.

**Impact expected and Action Suggested due to light to moderate rainfall with thunderstorm/lightning:**

- Be cautious and take precautionary measures, though there is the likelihood of thunderstorms/lightning.
- Damage to standing crops, Minor to major damage to power and communication lines due to breaking of branches, Partial damage to vulnerable structures due to strong winds, Loose objects may fly.
- People are advised to keep a watch on the weather for worsening conditions and be ready to move to safer places accordingly, stay indoors, close windows & doors and avoid travel if possible, take safe shelters; do not take shelter under trees, do not lie on concrete floors and do not lean against concrete walls, unplug electrical/ electronic appliances, immediately get out of water bodies, keep away from all the objects that conduct electricity.

### Impact & Action Suggested due to

- ✓ **Extremely heavy rainfall** very likely at isolated places over Meghalaya, Sub-Himalayan West Bengal & Sikkim on 02<sup>nd</sup> & 03<sup>rd</sup>; Arunachal Pradesh on 03<sup>rd</sup>, north Bihar on 02<sup>nd</sup>, Kerala and Tamil Nadu on 05<sup>th</sup> August.
- ✓ **Very heavy rainfall** over Arunachal Pradesh during 02<sup>nd</sup>-08<sup>th</sup> August; Assam & Meghalaya during 02<sup>nd</sup>-04<sup>th</sup> and 07<sup>th</sup> & 08<sup>th</sup>, Sub-Himalayan West Bengal & Sikkim on 04<sup>th</sup>; Bihar on 03<sup>rd</sup> Himachal Pradesh on 02<sup>nd</sup>, 04<sup>th</sup> & 05<sup>th</sup>; Uttarakhand during 03<sup>rd</sup>-05<sup>th</sup>; West Uttar Pradesh on 04<sup>th</sup>; East Uttar Pradesh on 03<sup>rd</sup> & 04<sup>th</sup>, Tamil Nadu during 03<sup>rd</sup>-05<sup>th</sup> and Kerala during 03<sup>rd</sup>-08<sup>th</sup> August.

### Impact Expected

- Localized Flooding of roads, water logging in low lying areas and closure of underpasses mainly in urban areas of the above region.
- Occasional reduction in visibility due to heavy rainfall.
- Disruption of traffic in major cities due to water logging in roads leading to increased travel time.
- Minor damage to kutcha roads.
- Possibilities of damage to vulnerable structure.
- Localized Landslides/Mudslides/landslips/mudslips/landsinks/mudsinks.
- Damage to horticulture and standing crops in some areas due to inundation.
- It may lead to riverine flooding in some river catchments (for riverine flooding please visit Web page of CWC)

### Action Suggested

- Check for traffic congestion on your route before leaving for your destination.
- Follow any traffic advisories that are issued in this regard.
- Avoid going to areas that face the water logging problems often.
- Avoid staying in vulnerable structure.

### Agromet advisories for likely impact of Heavy / Heavy to Very Heavy / Extremely Heavy Rainfall

- In **Arunachal Pradesh**, postpone all fresh sowing operations till cessation of heavy rains. Avoid fresh transplanting of rice in lowlands during heavy rainfall. Cover rice fields with natural mulches like dry leaves or straw to avert the adverse impact of rain. Ensure proper drainage in rice, maize, finger millet, soybean and vegetables and fruit orchards to avoid waterlogging. Provide strong support to fruit-bearing plants to prevent them from bending or breaking during heavy rains.
- In **Assam**, postpone the sowing of sesame, green gram and pigeon pea till cessation of heavy rains in **Kokrajhar** and **Bongaigaon** districts. In **Central Brahmaputra Valley Zone**, harvest matured jute immediately and keep the bundles of harvested produce in high land or shed to avoid retting in contaminated water. Avoid sowing of sesame during heavy rainfall. To prevent waterlogging, ensure proper drainage in *Sali* rice, green gram and pigeon pea fields in **Lower Brahmaputra Valley Zone**; *Sali* rice, turmeric and already sown sesame fields in **Central Brahmaputra Valley Zone**; rice and sesame fields in **Hill Zone** and *Sali* rice fields in **North Bank Plain Zone**, **Upper Brahmaputra Valley Zone** and **Barak Valley Zone**.
- In **Meghalaya**, avoid transplanting of rice during heavy rainfall. Ensure proper drainage in rice, maize, turmeric, chilli, okra and bitter gourd fields to prevent waterlogging. Provide staking / support to tall and fragile crops like banana, papaya, bottle gourd etc. to prevent lodging.
- In **Sub-Himalayan West Bengal**, make provision to drain out excess water from rice, ginger, vegetable fields and fruit orchards in **Hill Zone** and *aman* paddy and vegetable fields in **Terai Zone**. Cover the chilli seedlings with plastic to protect them from heavy rains in **Terai Zone**.
- In **Bihar**, ensure proper drainage in maize, vegetables, ragi, kodo, sava, etc. in low-lying areas and strengthen field bunds in **South Bihar Alluvial Zone**. Maintain proper drainage in maize fields and do not allow rain water to accumulate in the fields of ragi, kodo, sava, china etc. in **North East Alluvial Zone**.
- In **Uttarakhand**, to avoid waterlogging, maintain proper drainage channels in fields of rice, sugarcane, maize, black gram, green gram, soybean, and vegetables in **Bhabar and Terai Zone** and barnyard millet, finger millet, green gram and black gram in **Sub Humid Sub Tropic Zone**. Postpone sowing of green gram and soybean in **Nainital** district. In **Hill Zone**, strengthen the bunds to prevent surface runoff of water.



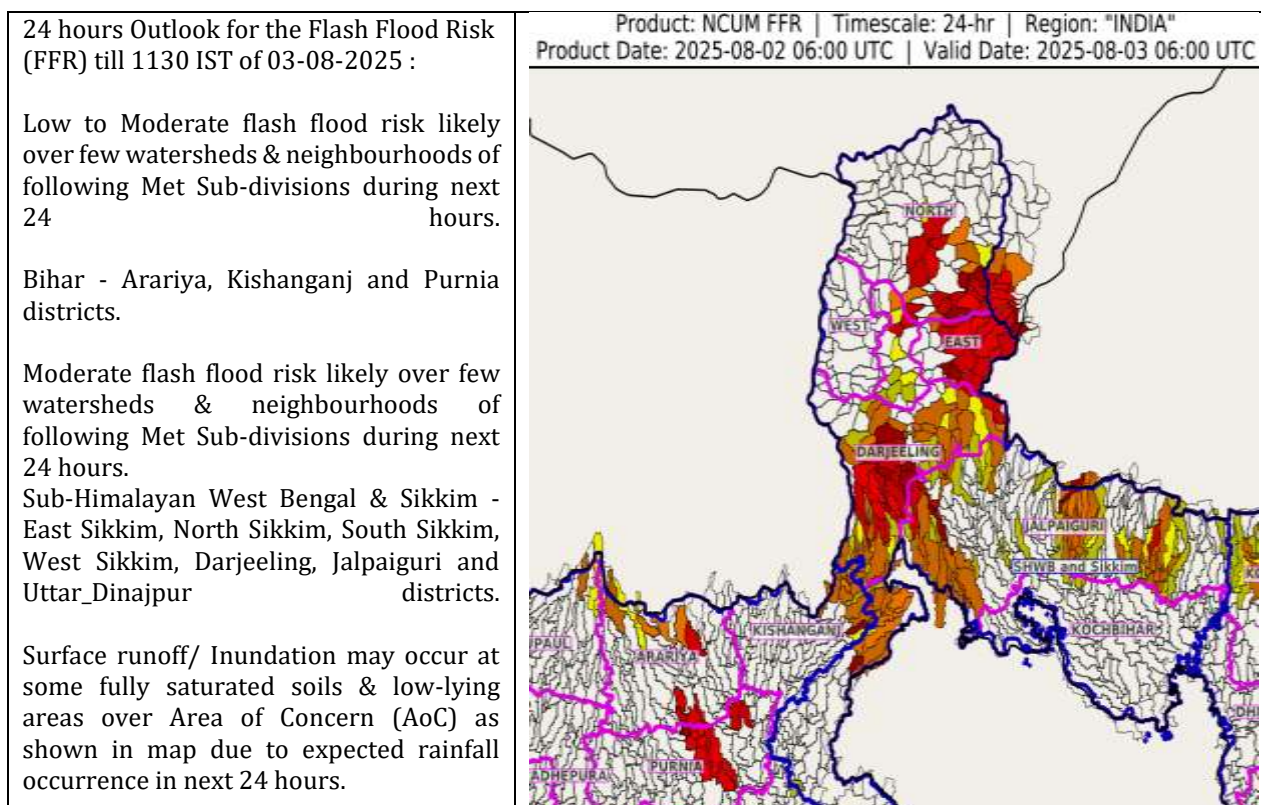
Postpone sowing of vegetable pea in case of excessive wet soil conditions. Maintain proper drainage channels in the crop fields.

- In **Himachal Pradesh**, cover the cauliflower nursery with plastic sheets to prevent damage from heavy rainfall in **High Hills Sub Temperate Wet Zone**. Make proper drainage channels in vegetable fields in **Mid Hills Sub Humid Zone**; rice, maize and vegetable fields in **Sub Montane and Low Hills Sub Tropical Zone** and kidney beans, finger millet, cucurbits and vegetables in **High Hills Sub Temperate Wet Zone**.
- In **Kerala**, provide adequate drainage in fields of rice, coconut, banana and ginger. Provide support to banana plantations. Make the vegetable pandals stronger.
- In **Tamil Nadu**, provide support to sugarcane and banana plants to prevent lodging. Provide proper drainage facility in rice nursery in **North Eastern Zone** and standing crop fields in **Cauvery Delta Zone**.

#### Livestock / Fishery

- Keep the animals inside the shed during heavy rainfall and provide them balanced feed.
- Store feed and fodder in a safe place to prevent spoilage.
- Construct an outlet with proper netting around the ponds to drain out excess water, thereby preventing fish from escaping in case of overflow.

#### Flash flood guidance:

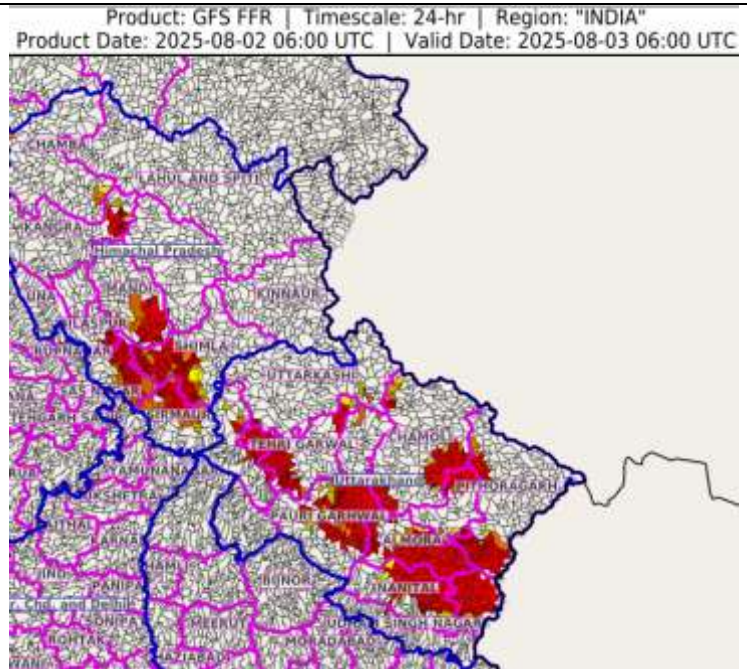


24 hours Outlook for the Flash Flood Risk (FFR) till 1130 IST of 03-08-2025 :

Low to Moderate flash flood risk likely over few watersheds & neighbourhoods of following Met Sub-divisions during next 24 hours.

Himachal Pradesh - Bilaspur, Chamba, Kangra, Kullu, Mandi, Shimla, Sirmaur and Solan districts.  
Uttarakhand - Almora, Bageshwar, Chamoli, Champawat, Dehradun, Nanital, Pauri Garhwal, Pithoragarh, Rudraprayag, Tehri Garwal and Uttarkashi districts.

Surface runoff/ Inundation may occur at some fully saturated soils & low-lying areas over Area of Concern (AoC) as shown in map due to expected rainfall occurrence in next 24 hours.



#### Legends & abbreviations:

- ❖ **Heavy Rain:**64.5-115.5mm; **Very Heavy Rain:**115.6-204.4mm; **Extremely Heavy Rain:** >204.4mm.
- ❖ **Obsy:** Observatory; Automatic Weather Station; **ARG:** Automatic Rain Gauge; **dist:** District; **NH:** National Highway; **KVK:** Krishi Vigyan Kendra; **DVC:** Damodar Valley Corporation; **PTO:** Part Time Office, **Aero:** Aerodrome, **IAF:** Indian Air Force.
- ❖ **Region wise classification of meteorological Sub-Divisions:**
  - **Northwest India:** Western Himalayan Region (Jammu-Kashmir-Ladakh-Gilgit-Baltistan-Muzaffarabad, Himachal Pradesh and Uttarakhand); Punjab, Haryana-Chandigarh-Delhi; West Uttar Pradesh, East Uttar Pradesh, West Rajasthan and East Rajasthan.
  - **Central India:** West Madhya Pradesh, East Madhya Pradesh, Vidarbha and Chhattisgarh.
  - **East India:** Bihar, Jharkhand, Sub-Himalayan West Bengal & Sikkim; Gangetic West Bengal, Odisha and Andaman & Nicobar Islands.
  - **Northeast India:** Arunachal Pradesh, Assam & Meghalaya and Nagaland, Manipur, Mizoram & Tripura.
  - **West India:** Gujarat Region, Saurashtra & Kutch, Konkan & Goa, Madhya Maharashtra and Marathawada.
  - **South India:** Coastal Andhra Pradesh & Yanam, Telangana, Rayalaseema, Coastal Karnataka, North Interior Karnataka, South Interior Karnataka, Kerala & Mahe, Tamil Nadu, Puducherry & Karaikal and Lakshadweep.



## LEGENDS

1. अंडमान और निकोबार द्वीपसमूह

2. अरुणाचल प्रदेश

3. असम और मेघालय

4. नागालैंड, मणिपुर, मिजोरम और त्रिपुरा

5. उप-हिमालयी पश्चिम बंगाल और सिक्किम

6. गंगीय पश्चिम बंगाल

7. ओडिशा

8. झारखंड

9. बिहार

10. पूर्वी उत्तर प्रदेश

11. पश्चिम उत्तर प्रदेश

12. उत्तराखंड

13. हरियाणा, चंडीगढ़ और दिल्ली

14. पंजाब

15. हिमाचल प्रदेश

16. जम्मू और कश्मीर और लद्दाख

17. पश्चिम राजस्थान

18. पूर्वी राजस्थान

19. पश्चिम मध्य प्रदेश

20. पूर्वी मध्य प्रदेश

21. गुजरात

22. सौराष्ट्र

23. कोंकण और गोवा

24. मध्य महाराष्ट्र

25. मराठवाड़ा

26. विदर्भ

27. छत्तीसगढ़

28. तटीय आंध्र प्रदेश और यनम

29. तेलंगाना

30. रायलसीमा

31. तमिलनाडु, पुडुचेरी और कराईकल

32. तटीय कर्नाटक

33. आंतरिक उत्तरी कर्नाटक

34. आंतरिक दक्षिणी कर्नाटक

35. केरल और माहे

36. लक्षद्वीप



1. Andaman & Nicobar Islands

2. Arunachal Pradesh

3. Assam & Meghalaya

4. Nagaland, Manipur, Mizoram & Tripura

5. Sub-Himalayan West Bengal & Sikkim

6. Gangetic West Bengal

7. Odisha

8. Jharkhand

9. Bihar

10. East Uttar Pradesh

11. West Uttar Pradesh

12. Uttarakhand

13. Haryana, Chandigarh & Delhi

14. Punjab

15. Himachal Pradesh

16. Jammu & Kashmir and Ladakh

17. West Rajasthan

18. East Rajasthan

19. West Madhya Pradesh

20. East Madhya Pradesh

21. Gujarat

22. Saurashtra

23. Konkan & Goa

24. Madhya Maharashtra

25. Marathwada

26. Vidarbha

27. Chhattisgarh

28. Coastal Andhra Pradesh & Yanam

29. Telangana

30. Rayalaseema

31. Tamilnadu, Puducherry & Karaikal

32. Coastal Karnataka

33. North Interior Karnataka

34. South Interior Karnataka

35. Kerala & Mahe

36. Lakshadweep

## SPATIAL DISTRIBUTION (% of Stations reporting)

% Stations	Category	% Stations	Category
76-100	Widespread (WS/Most Places)	26-50	Scattered (SCT/A Few Places)
51-75	Fairly Widespread (FWS/Many Places)	1-25	Isolated (ISOL)



Fog



Heavy Snow



Cold Wave



Heavy Rain



Dust Storm



Cold Day



Very Heavy Rain



Heat Wave



Ground Frost



Extremely Heavy Rain



Warm Night



Thunder & Lightning



Hot Day



Hailstorm



Hot & Humid



Dust Raising Winds



Strong Surface Winds

### COLOUR CODED WARNING

No Warning (No Action)

Watch (Be Aware)

Alert (Be Prepared To Take Action)

Warning (Take Action)

### Probabilistic Forecast

Terms	Probability of Occurrence (%)
Unlikely	< 25
Likely	25 - 50
Very Likely	50 - 75
Most Likely	> 75

\* Red colour warning does not mean "Red Alert", Red colour warning means "Take Action".

Forecast and Warning for any day is valid from 0830 hours IST of day till 0830 hours IST of next day.

For more details, kindly visit <https://mausam.imd.gov.in> or contact: 011-2434-4599

(Service to the Nation since 1875)

## DEFINITION/CRITERIA

### Rain/ Snow \*

Heavy: 64.5 to 115.5 mm/cm \*  
Very Heavy: 115.6 to 204.4 mm/cm \*  
Extremely Heavy: > 204.4 mm/cm \*

### Heat Wave

When maximum temperature of a station reaches  $\geq 40^{\circ}\text{C}$  for plains and  $\geq 30^{\circ}\text{C}$  for hilly regions

(a) Based on Departure from normal

Heat Wave: Maximum Temperature Departure from normal  $4.5^{\circ}\text{C}$  to  $6.4^{\circ}\text{C}$ .

Severe Heat Wave: Maximum Temperature Departure from normal  $\geq 6.5^{\circ}\text{C}$

(b). Based on Actual maximum temperature

Heat Wave: When actual maximum temperature  $\geq 45^{\circ}\text{C}$ .

Severe Heat Wave: When actual maximum temperature  $\geq 47^{\circ}\text{C}$ .

(c). Criteria for heat wave for coastal stations

When maximum temperature departure is  $> 4.5^{\circ}\text{C}$  from normal. Heat Wave may be described provided maximum temperature  $\geq 37^{\circ}\text{C}$ .

### Warm Night

When maximum temperature remains  $40^{\circ}\text{C}$

Warm Night: When minimum temperature departure  $4.5^{\circ}\text{C}$  to  $6.4^{\circ}\text{C}$ .

Severe Warm Night: When minimum temperature departure  $> 6.4^{\circ}\text{C}$ .

### Cold Wave

When minimum temperature of a station  $\leq 10^{\circ}\text{C}$  for plains and  $\leq 0^{\circ}\text{C}$  for hilly regions.

(a). Based on departure

Cold Wave: Minimum Temperature Departure from normal  $-4.5^{\circ}\text{C}$  to  $-6.4^{\circ}\text{C}$ .

Severe Cold Wave: Minimum Temperature Departure from normal  $\leq -6.5^{\circ}\text{C}$

(b) Based on actual Minimum Temperature (for Plains only)

Cold Wave: When Minimum Temperature is  $\leq 4.0^{\circ}\text{C}$

Severe Cold Wave: When Minimum Temperature is  $\leq 2.0^{\circ}\text{C}$

(c) For Coastal Stations

When Minimum Temperature departure is  $\leq -4.5^{\circ}\text{C}$  & actual Minimum Temperature is  $\leq 15^{\circ}\text{C}$

### Cold Day

When minimum temperature of a station  $\leq 10^{\circ}\text{C}$  for plains and  $\leq 0^{\circ}\text{C}$  for hilly regions

Based on departure

Cold Day: Maximum Temperature Departure from normal  $-4.5^{\circ}\text{C}$  to  $-6.4^{\circ}\text{C}$ .

Severe Cold Day: Maximum Temperature Departure from normal  $\leq -6.5^{\circ}\text{C}$

### Fog

Phenomenon of small droplets suspended in air and the horizontal visibility  $< 1\text{km}$

Moderate Fog: When the visibility between 500-200 metres

Dense Fog: when the visibility between 50- 200 metres

Very Dense Fog: when the visibility  $< 50$  metres

### Thunderstorm

Sudden electrical discharges manifested by a flash of light (Lightning) and a sharp rumbling sound (thunder)

### Dust/Sand Storm

An ensemble of particles of dust or sand energetically lifted to great heights by a strong and turbulent wind.

### Frost

Ice deposits on ground

Air temperature  $\leq 4^{\circ}\text{C}$  ( over Plains)

### Squall

A strong wind that rises suddenly, lasts for atleast 1 minute.

Moderate: Wind speed 52-61 kmph

Severe: Wind speed 62-67 kmph

Very Severe: Wind speed  $> 67$  kmph

### Sea State

Effect of various waves in the sea over specific area

Rough to very rough: Wind speed 41-62 kmph (22-33 knots) & Wave height 2.5-6 metre

High to very high: Wind speed 63-117 kmph ( 34-63 knots) & Wave height 6-14 metre

Phenomenal: Wind speed  $> 117$  kmph ( $> 63$  knots) & Wave height  $> 14$  metre

### Cyclone

Cyclonic Storm: Wind speed 62-87 kmph (34-47 knots)

Severe Cyclonic Storm: Wind speed 88-117 kmph (48-63 knots)

Very Severe Cyclonic Storm: Wind speed 118-165 kmph (64 - 89 knots)

Extremely Severe Cyclonic Storm: Wind speed 166-220 kmph (90 -119 knots)

Super Cyclone Storm: Wind speed  $> 220$  kmph ( $> 119$  knots)

\* Red colour warning does not mean "Red Alert", Red colour warning means "Take Action".

Forecast and Warning for any day is valid from 0830 hours IST of day till 0830 hours IST of next day.

For more details, kindly visit <https://mausam.imd.gov.in> or contact: 011-2434-4599

(Service to the Nation since 1875)

**Hot and Humid:** When maximum temperatures remain  $3^{\circ}\text{C}$  above normal along with the above normal relative humidity.